

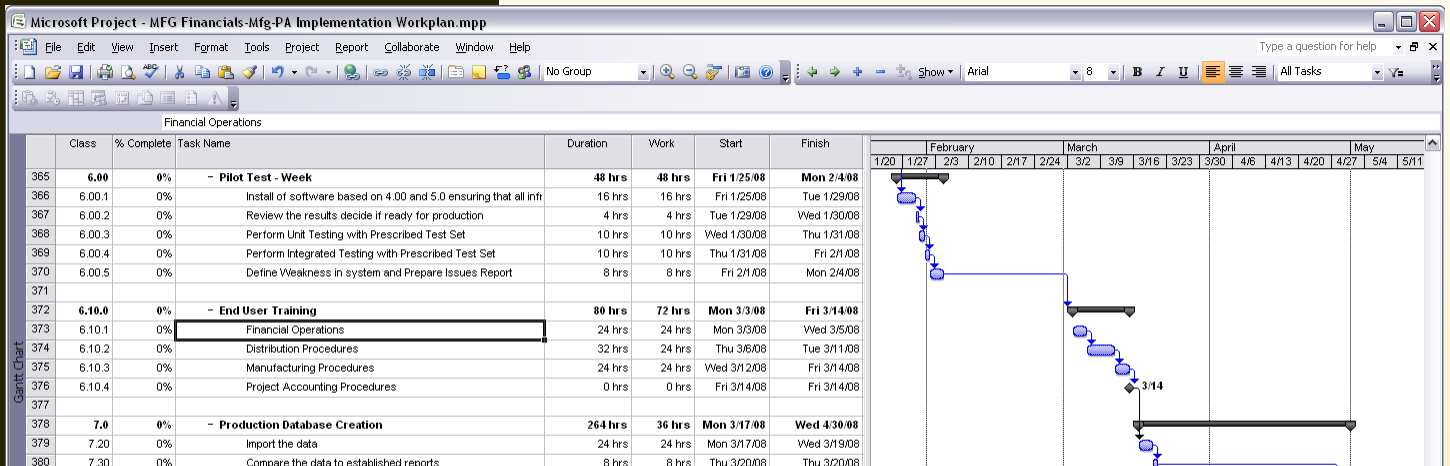


empowering you with knowledge

An experienced guide can get you to the top of a mountain faster and safer than you can by yourself. Our project managers keep you on the trail and set the pace for your implementation projects. Project managers coordinate resource schedules and keep the project on track via periodic status meetings with your team and e2b consulting resources.

We only employ seasoned consultants trained by the software publishers on each of the products we represent. Consultants have an average of more than 10 years ERP and business application implementation experience across countless industries. Companies choose e2b tek technologies because they cannot afford to fail in their ERP implementations.

We plan each implementation down to the last detail like an experienced hiker would plan for a week-long excursion. Project plans are mapped out using Microsoft Projects and managed through our implementation portal where everyone can see assigned tasks, project status, and task schedules.



Tasks - Windows Internet Explorer

Customer Portal

e2bsoft software

Cignys Workspace

customer portal calibration add-ons support reseller account info vendor

Customer Portal > support portal > Cignys Workspace > Tasks

Use the Tasks list to keep track of work that you or your team needs to do.

Title	Assignee
Kick Off Meeting	
Extract Chart of Accounts From Mapics	Beth R...
Finalize Chart of Accounts	John H...
GL Account Categories	John H...
Default G/L Accounts - John Hutchinson	John H...
Sample of all Financial Reports - John Hutchinson	John H...

Calendar - Windows Internet Explorer

Customer Portal

e2bsoft software

Cignys Workspace

customer portal calibration add-ons support reseller account info vendor

Customer Portal > support portal > Cignys Workspace > Calendar

Use the Calendar list to keep informed of upcoming meetings, deadlines, and other important events.

View: Calendar

January 31 - February 06 2010

Day	Event
Monday 1	Go Live & Support (Wraparound Weekend)
Tuesday 2	Bruce Combs On Site
Wednesday 3	System Go Live

your success lies not in the products you buy, but in the partners you choose

e2b tek technologies • 521 fifth ave. • chardon, oh 44024 • p: 440.352.4700 • f: 440.286.2092 • www.e2btek.com



Implementation & Consulting

I am writing to tell you how impressed I am with what e2b teknolojies has done for us in the last few weeks.

- *They have cleaned up our database issues that were caused by a previous reseller – this after we had paid another reseller to “correct” what was done.*
- *Within an extremely short time they determined the problem with our Short Stock Report. It turned out to be a 30 second fix and I think less than an hour was spent determining the cause of the negative inventory showing on our Short Stock Report.*
- *They have identified and have a fix that is being tested right now on the Integrity Check that runs every night. This utility had failed continuously for almost a year and no-one was able to get it working.*
- *Upon their initial review of our system they identified issues that we have had for years, and fixed them in record time.*

I could spend hours telling you all the things that have been corrected, and in such a short time, and with minimal business interruption, but I don’t have the time and don’t want to bore you with the details. All I can say is to quote what our IT department said to me today, “They are fixing things so fast, we can’t keep track of all they have done, let alone keep up with all the fixes they have made!”

I have had employees tell me how much better the system is running since these fixes have been made. Instead of 6 screens, they can do their work using only 2 screens – because it is now working the way it should have been all along!

-Fastco Industries



charting your course – implementation strategies

Similar to the evaluation process, companies have different needs when it comes to implementing business applications. e2b teknolojies will be there to support your implementation team. There are three implementation options that are available to customers. Each of these provide a basic framework for the implementation and may be customized depending on your specific needs.

QuickStart

- Customer Self-Implementation
- e2b technical and consulting assistance as-needed
- Typically 75-100% of Product SLP

Team

- Collaborative Implementation
- e2b project management, consulting, and technical assistance throughout
- Typically 100-150% of Product SLP

Turnkey

- Limited customer participation
- Extensive e2b project management, consulting and technical assistance
- Typically 150-200% of Product SLP

your success lies not in the products you buy, but in the partners you choose

e2b teknolojies • 521 fifth ave. • chardon, oh 44024 • p: 440.352.4700 • f: 440.286.2092 • www.e2btek.com





crossing the chasm – engineering services

As an independent reseller, we can sell just about any business application that we want to represent. That's why we selected three of the leading enterprise resources planning products available for manufacturers, wholesale distributors, and business service companies.

However, very few companies find a perfect business solution that supports all of their critical requirements out-of-the-box without customizations. Our experience shows that most customers are lucky to find a solution that meets 80-90% of their needs. So what do you do to cover the remaining 10-20%? Some companies change their business processes, implement timely, manual work-arounds, or worse still – simply ignore the problems.

best practices in engineering and design

e2b tekologies has one of the largest and most experienced engineering teams of any business application partner in the Great Lakes region. With an average of nearly 20 years of development experience, our engineers have worked with major software publishers including Sage Software, Oracle (Datalogix), SAP, MAI Systems, Misys, and Thoroughbred Software (to name just a few).

We have made significant financial investments in our virtualized development environment which includes dedicated development servers, daily back-ups, disaster recovery procedures, and source safe to control changes made to customer applications.

ERP Development

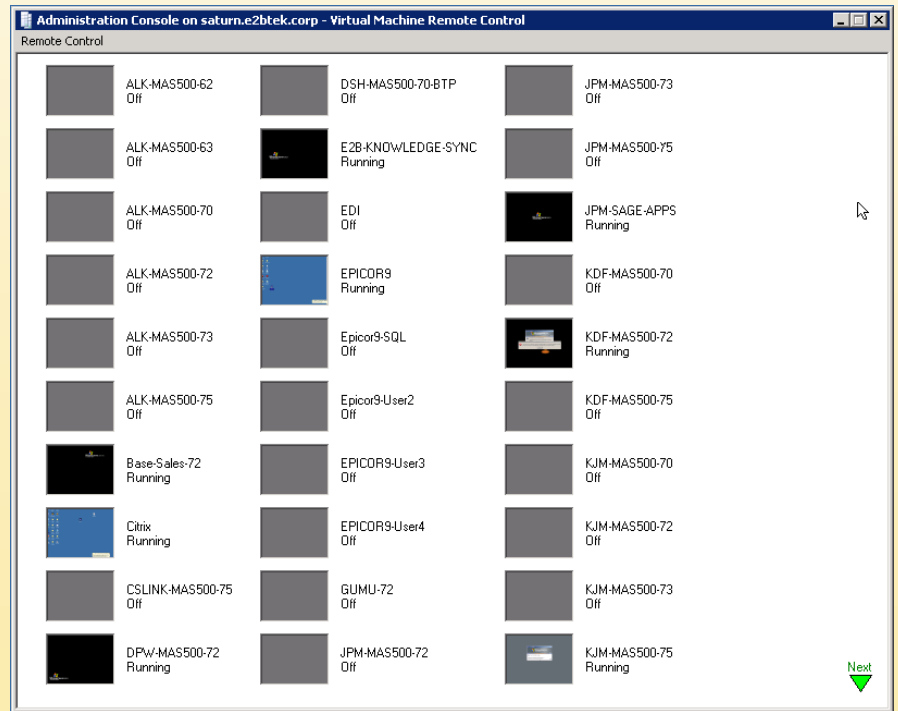
- Sage MAS 500 ERP
- Epicor
- SingleSource SM-Plus Enterprise

Migration & Integration

- Legacy data migration / import
- Data cleansing and validation
- Custom integrations to existing business applications

Technical Expertise

- Microsoft .NET
- Microsoft Visual Basic
- Microsoft SQL Server
- Microsoft SharePoint
- Microsoft Silverlight
- ASP.NET & HTML
- Java, C, C++
- Ajax
- Cobol
- Business Basic



One of many e2b tekologies virtualized development servers used for custom programming, quality assurance testing, and customer support.

your success lies not in the products you buy, but in the partners you choose

e2b tekologies • 521 fifth ave. • chardon, oh 44024 • p: 440.352.4700 • f: 440.286.2092 • www.e2btek.com



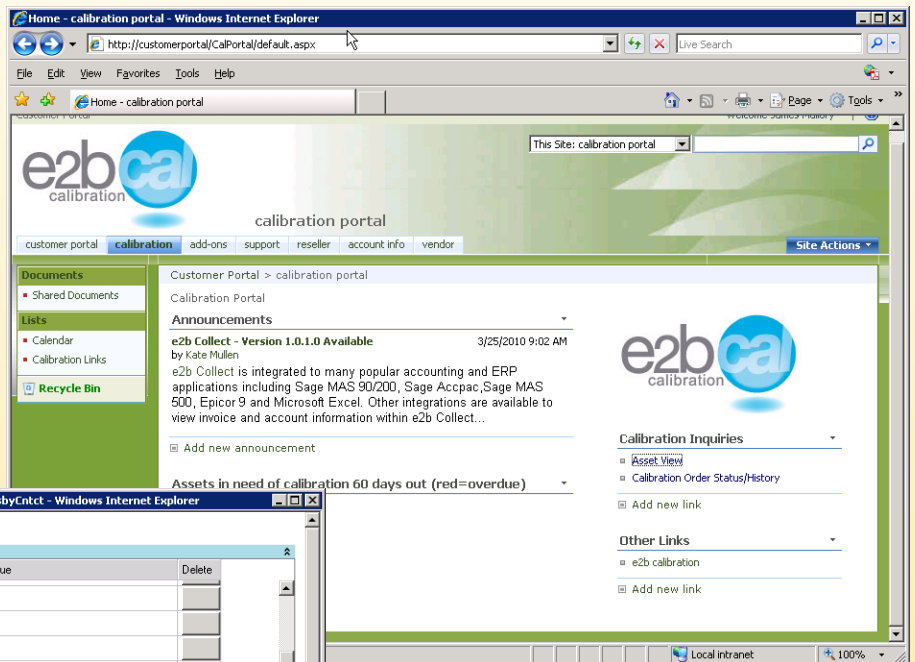


securing your source code

Optional source code escrow services are available providing you with the assurance that your investment in custom programming is protected and portable to other service providers. Maintenance and support plans are available for larger customization projects so that you can rest assured that your system is fully supported and maintained for future versions and new database and operating system technologies.

project definition and fees

Projects are billed either on a time and material basis or fix-bid basis. All projects require sign-off on a statement of work detailing the scope of the custom programming project. With larger projects, we provide functional designs which are reviewed and approved by your team to ensure that the modifications are exactly what you're expecting. Further, all engineering projects – large and small – are tested by our quality assurance department before they are delivered to you for installation on your test or production system.



http://customerportal/_layouts/e2bcustomerportal/view.aspx?NavKey=9&NavID=CalOrdersByCntct - Windows Internet Explorer

Attribute	Condition	Value	Value	Delete
DateNextCal	(All)			
DateShipped	(All)			
Invoice	(All)			
Item	Contains	meter		
OtherAssetID	(All)			
PerformedBy	(All)			
SalesOrder	(All)			

Search Add New filter Criteria Export to Excel

Search Results

Certification	Sales Order	Type	Asset	Calibration Order	Item	Other Asset	PO No	Invoice	Serial Number
00003411.pdf	0000003371.pdf	Calibrate	00003411	0000008339	C-Neiko-Digital Tachometer		09/6820.pdf	0000012071.IN	99791996
21000897.pdf	0000002820.pdf	Calibrate	21000897	2100001511	C-Genetric-Micrometer-7-8"	Mike Corley	169836.pdf	0000009335.IN	NONE
21000897.pdf	0000003332.pdf	Calibrate	21000897	2200002805	C-Genetric-Micrometer-7-8"	Mike Corley	175259.pdf	0000012065.IN	NONE
21000898.pdf	0000002820.pdf	Calibrate	21000898	2100001512	C-Genetric-Micrometer-6-7"	Mike Corley	169836.pdf	0000009335.IN	NONE
21000898.pdf	0000003332.pdf	Calibrate	21000898	2200002804	C-Genetric-Micrometer-6-7"	Mike Corley	175259.pdf	0000012065.IN	NONE
21000899.pdf	0000002820.pdf	Calibrate	21000899	2100001513	C-Genetric-Micrometer-5-6"	Mike Corley	169836.pdf	0000009335.IN	NONE
21000899.pdf	0000003332.pdf	Calibrate	21000899	2200002803	C-Genetric-Micrometer-5-6"	Mike Corley	175259.pdf	0000012065.IN	NONE
21000900.pdf	0000002820.pdf	Calibrate	21000900	2100001514	C-Genetric-Micrometer-4-5"	Mike Corley	169836.pdf	0000009335.IN	NONE
21000900.pdf	0000003332.pdf	Calibrate	21000900	2200002802	C-Genetric-Micrometer-4-5"	Mike Corley	175259.pdf	0000012065.IN	NONE

Let us help you deploy data from your business applications to employees, customers, and vendors via secured Microsoft SharePoint Portals. This is an example of sales order, invoice, and other data from Sage MAS 500 and a custom calibration management system available to customers of e2b calibration.

your success lies not in the products you buy, but in the partners you choose

e2b technologies • 521 fifth ave. • chardon, oh 44024 • p: 440.352.4700 • f: 440.286.2092 • www.e2btek.com

